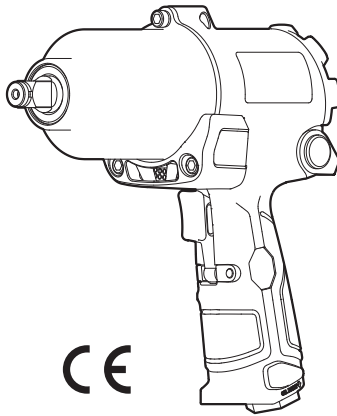


SP LINE

AIR IMPACT WRENCH

VSP-1148

Instruction Manual



Thank you for purchasing our Air Impact Wrench VSP-1148.
Read this instruction manual before use.
Keep it in a safe handy place for future reference.

Contents

For safe use	P2	Cleaning / Storage / After service	P14
Prior to use / Applications / Specifications	P6	Troubleshooting	P15
Product overview	P8	filter replacement	P16
How to operate / How to use	P9	Exploded view	P17
Maintenance and inspection	P13	Parts list	P18



For safe use

Thank you very much for having purchased the "VESSEL Air Impact Wrench VSP-1148".

For the safe and correct use of the air tool, read these instructions carefully before operating, maintaining or servicing.


After reading, please keep this manual in a safe place for future reference.

- The following icons represent the degree of danger that can be induced by user's action or environment. Please observe all the instructions presented in this manual as they are important for personal and public safety.

 Warning	Indicates possibility of serious or fatal injuries when instructions are not followed.
 Caution	Indicates possibility of injuries or property damage when instructions are not followed. *Depending on circumstances, failure to follow the instructions given in the "Caution" section could lead to serious consequences.

- Please keep this manual for your ready reference.
- In case this manual or any of the warning labels attached to the unit are lost or damaged, contact us or the local distributor for replacement.
- Please make sure this manual be kept with the unit when it is handed over or lent out to a third party.

If you have any inquiries about this product or manual, please contact us or your local distributor.

 **Warning** Please read this manual carefully and understand the contents fully before use.

 **Warning** Compressed air management

● **Specified air pressure should be applied.**

Excessive air pressure may lead to serious accidents or property damages. Install proper equipment including a pressure gauge and a reduction valve in order to keep the dynamic pressure at the tool end within the specified range.

● **Only compressed air should be applied.**

The air impact wrench is a tool driven by normal compressed air. There will be a risk of explosion if other high-pressure gases like oxygen, acetylene, and propane are used for the tool.

● **Choose the appropriate air hose.**

Use oil- and abrasion-resistant air hoses for the required air pressure and of the recommended inner diameter. Avoid using deteriorated or excessively long hoses.

For safe use

- **Prevent air leakage.**

Make sure that air plugs be firmly attached to the air hose. If the air hose comes off due to loose connection, it will bounce around by the force of compressed air and may cause personal injuries or property damages.

- ⚠ **Warning Work environment**

- **Keep the work area clean and bright.**

Dark or cluttered work environment leads to accidents. Keep the area tidy and well-lit.

- **Do not use the air tool in explosive atmosphere.**

This unit may create sparks, which may cause explosion.

- ⚠ **Warning Work clothes**

- **Wear appropriate work clothes.**

Do not wear baggy clothes, accessories, etc, which might be caught in revolving parts. Long hair should be tucked under a cap to keep it away from the tool.

- **Wear protective gears.**

Wear protective gears suitable for the task, including a helmet, protective goggles, earplugs, a dust mask, anti-vibration gloves and safety shoes, etc.

- ⚠ **Warning General precautions**

- **Beware of moving parts.**

Keep your hands and cloth away from the moving parts as they may be caught in them.

- **Keep a good posture while working.**

Keep a good posture and hold the tool firmly in case of an unexpected situation.

- **Avoid accidental start-up.**

Make sure the trigger is released before connecting the air hose to the unit. Be careful not to press the trigger when carrying the air tool.

- **Keep the tool away from electricity.**

The air tool is not insulated against electricity.

- **Stop using the tool if you notice any abnormalities.**

If you notice any abnormalities, stop using the tool immediately and contact us or your local distributor for maintenance, inspection, and repair.

For safe use

Warning Miscellaneous

- **Use the tool only for its intended applications.**
It may lead to an unexpected accident if the tool is used for purposes other than those specified in the manual.
- **Do not attempt any modification.**
Do not modify the unit. Any modification will void the warranty and may cause a hazardous situation.
- **Do not remove any parts.**
Also, do not use the tool if any of its parts or screws has been removed or missing. It may result in a hazardous situation.
- **Shut off the air supply and detach the air hose from the tool;**
 - when the tool is not in use
 - when the tool is kept in storage
 - when maintenance is performed
 - when the tool tip (bits/sockets) is replaced
 - when there is any sign of danger or malfunction

Caution Basic precautions for operating air tools

- **Pay attention.**
Stay alert while using the air tool and do not act thoughtlessly. Also, avoid using the tool when you are tired or under the influence of drug, alcohol, or medication.
- **Keep bystanders away.**
Do not let bystanders get close to your operation. Especially, children should be kept away.
- **Do not overload the air tool.**
If the tool is operated beyond the specified output range, it will damage the tool and lead to malfunction.
- **Beware of the exhaust port.**
Direct the exhaust air away from your eyes and ears. Otherwise, it can cause accidents or diseases as it contains oil and it may blow grit or other debris in your face.
- **Handle the tool with care.**
Do not throw or drop the tool. It may lead to damage or malfunction if it is handled roughly or forcefully.
- **Do not abuse the air hose.**
Do not carry, raise or lower the tool by the air hose. Damaged hoses increase the risk of accidents.
- **Do not drop the tool from a high place.**
Equipment like a safety strap should be used to prevent the tool from falling when working at high places.

For safe use

- **Store the tool in a safe place.**

If the tool is not to be used for a period of time, conduct maintenance and keep it in a safe, dry place. It should be kept out of the reach of children.

- **Be aware of laws.**

There are laws and regulations that may regulate or limit the use of this product. Please make sure that the use of this product does not violate any laws and regulations.

- **Take breaks.**

Continuous work without taking appropriate breaks could lead to illness, take breaks as required. If you feel abnormalities, such as pain, immediately stop using the tool and consult a physician.

 **Caution Maintenance, inspections and repairs**

- **Check before use.**

Make sure the unit has no loose screws/bolts and fittings and no damaged parts. If the unit is operated despite such problems, it could lead to a hazardous situation as well as decrease the performance.


- **Conduct inspection and maintenance regularly.**

Regular inspection and maintenance are necessary for safe and efficient performance of the tool.

- **Please contact us or the local distributor for repair or parts replacement.**

Never disassemble the unit or replace parts by yourself. Warranty on any of our products shall be void if defect is caused by abuse, neglect, improper repair, improper fit, or any use unintended by the manufacturer.

Prior to use

 Caution	<ul style="list-style-type: none">• Be careful not to get injured with the corner of the packing materials or the stapler needle.• Open the package and check if all the parts are inside without shortage and damage.• Be sure to read and understand this manual thoroughly before handling this product.• Keep the instruction manual in hand and refer to it whenever needed.• Store the instruction manual in a safe place. If the manual is lost or damaged, contact us or your local distributor for a new copy.
--	---

Applications

- This product is a compressed air driven impact wrench for professional use for tightening and loosening bolts/nuts. It is used to tighten or loosen bolts and nuts with more force than hand tools.

Icons for safety instructions



Read the manual
before use.



Wear protective goggles.



Wear earplugs.

Specifications

Part number	VSP-1148	No-load speed	6,600min ⁻¹
Square drive part	12.7mm (1/2inch)	Air pressure (Max)	0.6MPa
Capacity (normal bolt)	M14~M20	Air consumption	1.0m ³ /min
Torque range	380~550N·m (3,363~4,868lbf-in)	Compressor	2.5kW or more
		Air hose (inner diameter)	9,5mm (3/8inch)
Weight	2.5kg (88.2oz)	Hose coupling	NPT1/4
Overall length	198mm (7-51/64inch)		

● Package contents

- Coupling×1

⚠ Warning	<ul style="list-style-type: none"> • Do not allow the tool to get wet with water. If it gets wet, wipe it off immediately. If water gets inside the tool, it may cause malfunction. • Avoid using, maintaining, or storing the product in the following environments: in rain or damp environment / in dusty or powdery environment / in environment contaminated by oil, solvents or chemicals / in environment where sparking occurs
------------------	--

Sound / Vibrations

The noise and vibration values of this product have been measured with the air pressure used at 0.6 MPa and the air regulator lever adjusted to maximum output.

DECLARED DUAL-NUMBER NOISE EMISSION VALUES in accordance with ISO 4871		
A-weighted emission sound pressure level	L_{PA}	93 dB(A)
Uncertainty	K_{PA}	3 dB(A)
A-weighted sound power level	L_{WA}	104 dB(A)
Uncertainty	K_{WA}	3 dB(A)
Values determined according to noise test code given in ISO 15744, using the basic standards ISO 3744 and ISO 11203.		

NOTE: The sum of a measured noise emission value and its associated uncertainty represents an upper boundary of the range of values which is likely to occur in measurements.

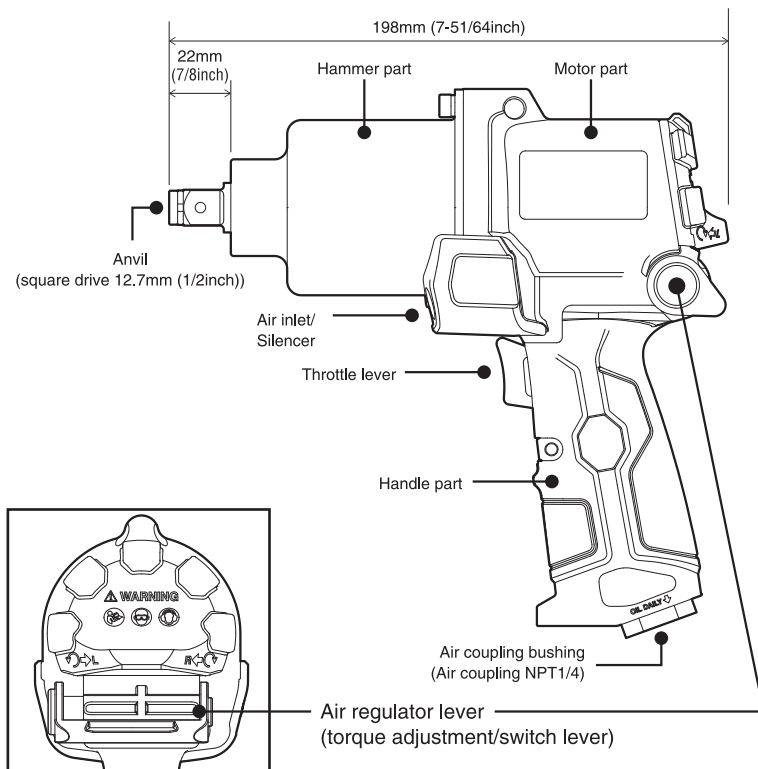
Declared vibration emission value in accordance with EN 12096		
Vibration emission value	a	11.6 m/s ²
Uncertainty	K	1.6 m/s ²
Values determined according to ISO 28927-2.		

● Sound prevention regulations

Sound level is regulated by laws and prefectural ordinances. Take appropriate measures to avoid disturbing your neighbors when using the product.

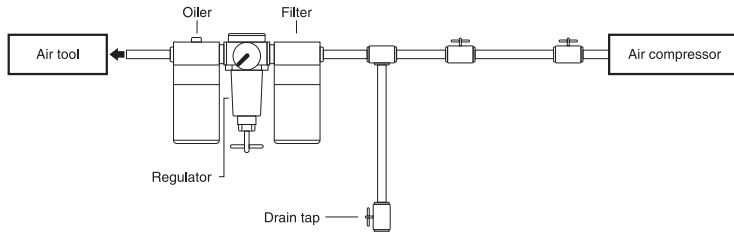
Product overview

Tool and part names



How to operate

Piping model



How to use

- For operating the tool, make sure to follow the procedures described in this instruction manual.
- Do not use the tool:
 - *If the socket/bit is not properly mounted or not compatible in size.
 - *If the work environment does not allow you to keep a stable posture, secure a firm grip on the tool or to operate the tool properly.
 - *If the floor is slippery or not level.
 - *If it is used for other purposes than tightening or loosening screws.
 - *If it has been modified or has any parts missing or lost.
 - *If the input air pressure is higher than the specified value.
 - *If more than the specified working torque is required.
- When the tool is not in use or left unattended, shut off the air supply and detach the air hose from it.

Preparations before use

⚠ Warning	<ul style="list-style-type: none">• Before use, check the tool for any abnormalities such as deformation, cracks, or damage. Failure to do so may result in accidents or injuries.• Ensure your safety by checking the surrounding area for any dangerous objects or approaching objects before use. Also, those around you should wear protective gear such as protective goggles and earplugs as necessary.• Secure and hold anything so that it does not fall or collapse due to vibrations during work.• When using the tool by suspending it, make sure there is no danger due to the weight or swaying.
------------------	--

● Before the first operation after purchase

When this air tool has been newly installed or the air hose has been replaced, blow and clean the inside of the hose and piping. Then, idle the device for a few seconds because lubricant within the mechanism has to be blasted out with exhaust air.

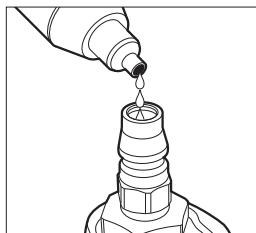
How to use

⚠ Caution Use only the specified oil for lubrication.

● Lubrication of the motor part

Lubricate the unit regularly for smooth operation of the motor part and to remove impurities.

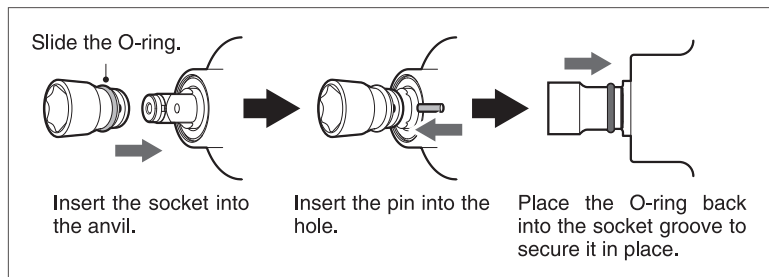
If you install an oiler, it will lubricate the tool automatically. Or, you can lubricate manually from the air supply port before or after use. (ISO VG10 or equivalent hydraulic oil)



● Installing the tip tool

⚠ Warning	<ul style="list-style-type: none">• When replacing or maintaining the tip tool, remove the air hose. Unintended operation may cause injury.• Use sockets for power tools only, not for hand tools. Doing so may cause damage to the socket, peeling of the plating, or scattering of fragments, which may result in accidents or injury.
⚠ Caution	<ul style="list-style-type: none">• Install the socket securely according to the instruction manual.• Do not use multiple sockets connected together. Also, use the appropriate size socket for each operation.

There is a pinhole on the point of the anvil (square drive part). Align the pinholes of the socket and anvil and attach the socket with the pin and O-Ring. Install as shown in the figure below.



● Check the air pressure

The specified air pressure for this air tool is 0.6 MPa. Do not apply air pressure outside this specified range as it influences performance, lifespan and safety.

How to use

● Remove the drain

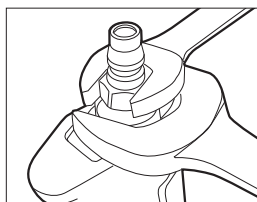
When moisture or impurities like rust in the pipe get into the mechanism, it may cause malfunction. Remove accumulated drain in the compressor before use. To secure dry air supply, install an air filter in order to prevent moisture and any impurities.

● Use an appropriate air hoses

Please refer to Specifications for choosing an air hose of the appropriate size for the applied air supply. If the internal diameter of the air hose is too small, sufficient power may not be obtained as air pressure cannot increase efficiently. It also happens when the hose is too long.

● Install the plug

Use a spanner to hold Air coupling Bushing and fasten the plug.



● Air coupling

When using the air coupling (plug), purchase a compatible connector (socket). When connecting a hose directly to this product, purchase a hose connection coupling. In both cases, check the size of the connected hoses.

● Changing the direction of rotation

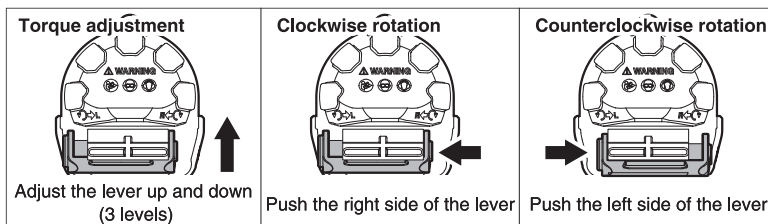
When the switch lever is set to "R" it rotates clockwise. When it is set to "L," it rotates counter clockwise.

● Adjusting the torque

Torque can be adjusted by moving the air regulator lever up and down. "1" is the minimum and "3" is the maximum.

*Do not operate the air regulator lever while pressing the throttle lever.

*Torque cannot be adjusted for left rotation.



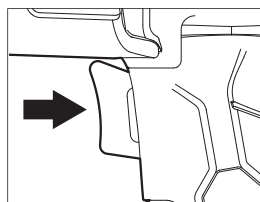
How to use

Use

⚠ Caution	<ul style="list-style-type: none">• Do not touch any rotating parts. It is very dangerous and could lead to injury.• Do not idle the tool without load.• Confirm the rotation direction before starting the unit.• Pay attention to the direction of the exhaust air. Use it with care so that the exhaust air does not directly hit your eyes, nose and mouth. (For the location of the air inlet, refer to “Tool and part names” on page 8).• Do not direct the exhaust towards fire. The exhaust is dangerous since it contains oil.• Do not touch the tip tool and screws immediately after the work because they became hot from friction during work.• When you notice any abnormalities, stop working and turn off the air supply.
------------------	---

● Starting and stopping

1. Connect the air coupling (plug) to the tool.
2. Supply air with a compressor.
3. Press the throttle lever to start the unit.
4. Release the throttle lever to stop the unit.



● Tightening bolts/nuts

- To tighten bolts/nuts, first tighten bolts/nuts by hand for a couple of thread pitches.
- After tightening is complete, immediately release the lever and stop the tool. Excessive tightening will cause bolts to be broken and life of the hammer parts to wear/tear quickly.

● When bolts/nuts cannot be loosened

- In case bolts/nuts cannot be loosened or tightened as required, please adopt an impact wrench with a higher capacity.


● Keep the tool away from organic solvents

- Be aware that dipping the tool in the organic solvents may deform the resin parts.

● In cold areas

- Moisture inside the tool may freeze in winter. Be sure to lubricate the tool to remove the moisture after use.

Maintenance and inspection

 Warning	• When conducting maintenance, be sure to remove the air coupling (socket) and do not supply any air.
--	---

- Inspect the product periodically to ensure safe and reliable use. If inspections are neglected, it may affect the performance, lifespan and safety of the product.
- Inspection (maintenance) should be conducted only by those who carefully read and fully understood the instruction manual for this product.
- Contact the local distributor for repairs. Do not repair the unit by yourself.
- The durability of parts depends on how frequently the unit is used.
- Please apply for inspection/repairing in case you notice any abnormality in impact and revolving sounds. (eg. in case of any abnormalities in the rhythm of hammering, deterioration in efficiency, and working torque degradation).

Product inspection

● **Anvil (square drive part on the tip)**

Worn out ... It will deteriorate the performance and decrease efficiency.
Early replacement of parts is recommended.

Cracks ... Stop using and seek professional help for repair.

● **Air coupling (plug)**

Loose screws ... Tighten them since it is dangerous if the hose comes off.

Worn out ... Replace with new parts since the coupling may come off if the connection is loose.

● **Throttle lever**

Return condition ... Confirm whether the lever returns properly. It is very dangerous to use the tool continuously if the lever does not return properly because the tool will start suddenly after connected. If the lever does not return, please request repairs.

● **Bolts for each part**

Loose bolts ... It may lead to air leaks and malfunctions. Please re-tighten the bolts.

● **Surface damage**

Cracks ... Stop using and request repairs.

Socket inspection

● **Socket**

Worn out square and hexagonal heads ... It may deteriorate the performance and the socket may detach from the anvil.

Cracks ... Stop using and replace it with a new one.

Cleaning

⚠ Caution	<ul style="list-style-type: none">• Do not allow liquids to get inside the product.• Clean regularly and keep clean.• Do not use chemicals or solvents for cleaning.
------------------	--

● How to clean

- Wipe clean with a dry cloth or a cloth soaked in soapy water and wrung out well.
- Do not use gasoline, alcohol, benzine, thinner, ketone (e.g., acetone), ether, and other similar chemicals for cleaning. Risk of discoloration, deformation or cracks.

Storage

⚠ Caution	<ul style="list-style-type: none">• Store the product in a stable position to prevent it from falling.
------------------	--

● Storage

Store in a location that avoids the following environments:

- Places exposed to direct sunlight, high temperature environments, environments where condensation or freezing may occur.
- Places reachable by children.

After service

- If you have any questions about the performance, quality, or handling of this product, contact your local distributor.
- For parts required for repair, check the part numbers and names of parts on the exploded view shown on page 17 to page 19.
- Send the product for repair via the route shown in the figure below. Avoid sending it directly to us, as this will cause delays.



For product failure, repair, or maintenance, contact your local distributor.

Troubleshooting

Warning

- Do not disassemble, repair or modify the impact wrench.
- For product repair, contact us or your local distributor.

Trouble	Cause	Action
No rotation	Air is not provided.	Turn on the air.
	The hose is twisted.	Straighten the hose.
	Air pressure is low.	Adjust the air pressure.
	Parts are rusted due to a lack of lubrication.	Lubricate the unit.
	Dirt contamination.	Request overhaul.
	Malfunction (worn out/damaged, etc.) on motor and hammer.	Request for parts replacement.
Rotation is uneven	Rate of air flow is inadequate.	Confirm air flow rate.
	Air pressure is low.	Adjust air pressure.
	Parts are rusted due to a lack of lubrication.	Lubricate the unit.
Rotation does not stop	Breakage of throttle valve.	Request for parts replacement.
	Change of shape of the throttle valve.	Request for parts replacement.
	Contamination by a foreign substance in the throttle valve.	Request overhaul.
Switch lever / Air regulator lever is loose	Stop spring or stop ball is worn out, damaged or rusted.	Request overhaul.
Switch lever / Air regulator lever does not work	Rust and dirt contamination.	Request overhaul.
Air leakage	Trouble with the valve (O-ring damage, ball rust, or worn-out, damaged and rusted springs etc).	Request for parts replacement.
Abnormal noise	Spare parts came loose.	Request overhaul.
	Worn out and damaged bearings.	Request for parts replacement.
	Damage to the hammer case and impact part.	Request for parts replacement.
	Worn out and damaged rotor blade.	Request for parts replacement.
	The rotor blade does not come out at rotating.	Request for parts replacement.
	Run out of lubrication and oil.	Lubricate the unit.
It rotates without a load but with a load it does not rotate and the power decreases	Parts of the hammer are damaged.	Request for parts replacement.
Water comes out	The drain is clogged.	Clean the drain.

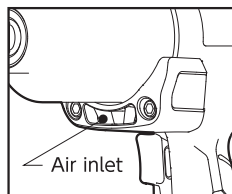
Request repairs immediately when the tool is in a defective and abnormal condition, etc., since it could lead to a product malfunction and accident. Please contact your local distributor for repairs.

filter replacement

This product has a filter installed in the air inlet, but use for long periods of time may cause the filter to become clogged, and the wrench may not perform as expected.

If you notice a decrease in rotation speed or torque, replace the filter with a new one.

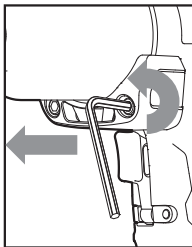
purchase filters at the dealer where you purchased this product.



How to replace the filter

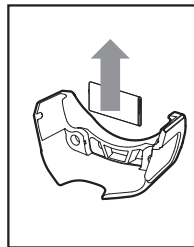
1

Remove the screws on either side of the air inlet using an L-wrench (width across flats: 4mm). After removing the screws, pull the air inlet cover toward you to remove it.



2

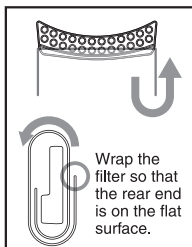
Remove the plate attached to the inside of the cover by sliding it upward.



3

Remove the old filter from the plate and wrap the new filter on.

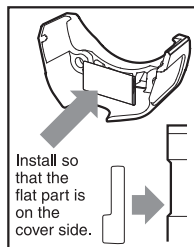
Using the convex part under the plate as a guide, wrap the filter from front to back.



4

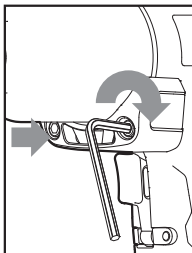
Attach the plate with the filter wrapped around the cover.

Install the plate by aligning it with the guide on the back of the cover and pushing it toward the flat cover.

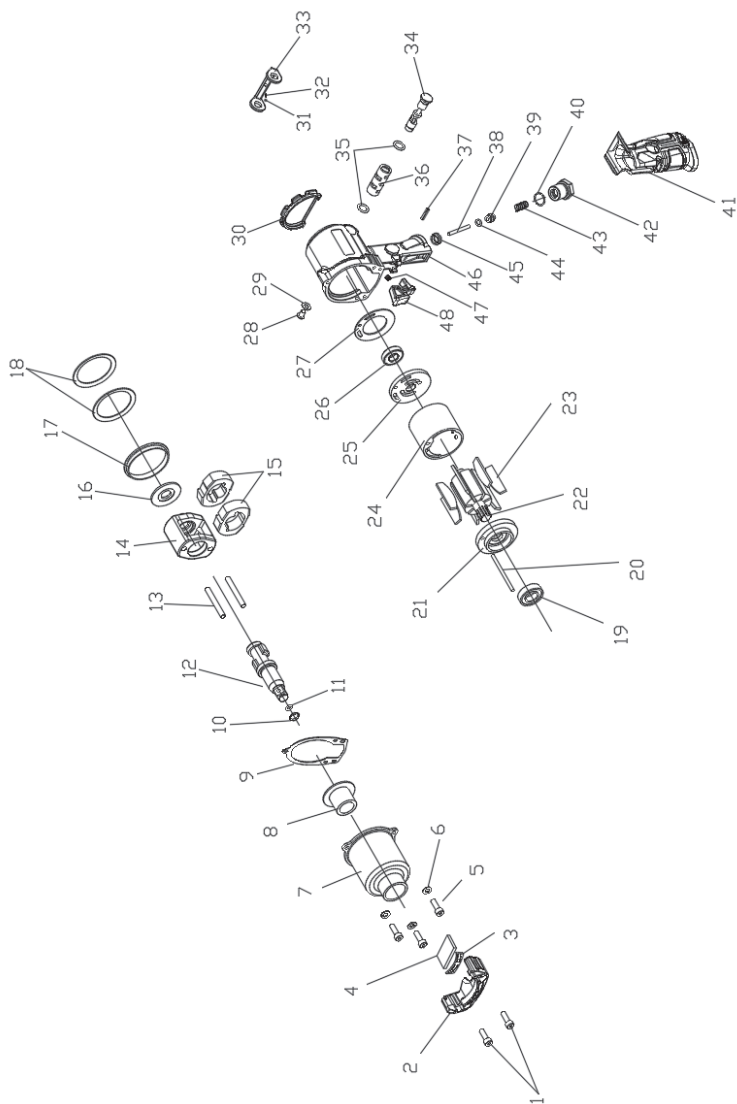


5

Install the air inlet cover and tighten the screws on the left and right using an L-wrench.



Exploded view



Index No.	Description	Size	Number Required per unit
1	Hex Cap Bolt	M5x15L	2
2	Exhaust Cover		1
3	Exhaust Plate		1
4	Filter		1
5	Hex Cap Bolt M5x18	M5x18L	3
6	Washer, Spring M5	M5	3
7	Hammer Housing Complete		1
8	Spindle Bush (Installed No. 7)		1
9	Gasket, Hammer Housing		1
10	Ring, Retainer (Installed No. 12)		1
11	O-ring (Installed No. 12)		1
12	Anvil Complete		1
13	Pin, Hammer Cage		2
14	Hammer cage		1
15	Hammer		2
16	Hammer cage washer		1
17	Pilot Ring		1
18	Spring		2
19	Bearing 16002Z	16002Z	1
20	Duel Pin		1
21	Endplate, Front		1
22	Rotor		1
23	Blade, Rotor		7
24	Cylinder		1
25	Endplate, Rear		1
26	Bearing 6001RS	6001RS	1
27	Gasket, Motor		1
28	Hex Cap Bolt with Extra-low Head M6x6	M6x6L	1
29	Washer, Flat M6		1
30	Cover, Rear		1
31	Ball, Stop	φ3.175 (1/8inch)	1
32	Spring, Stop		1
33	Lever, Air Regulator		1
34	Shaft, Reverse		1
35	O-ring P10	P10	2
36	Bushing, Reverse (Installed No. 46)		1
37	Pin, Spring P4x18	φ4x18L	1

Index No.	Description	Size	Number Required per unit
38	Throttle		1
39	Valve		1
40	O-ring		1
41	Cover, Handle		1
42	Bush, Air Coupling		1
43	Spring, Valve		1
44	O-ring		1
45	Seat, Valve		1
46	Motor Housing Complete		1
47	Hex Screw (Installed No. 46)		1
48	Lever, Throttle		1

Parts with () marked shall not be supplied individually even if ordered since it is an integrated component.

● The contents of this manual are subject to be changed without notice.



VESSEL

20-1 OSADANO-CHO
FUKUCHIYAMA-SHI, KYOTO, JAPAN
Tel: 0773-27-1310
Fax: 0773-27-1340

GB : EC DECLARATION OF CONFORMITY
F : DECLARATION DE CONFORMITE NORME CE
D : CE KONFORMITÄTSERKLÄRUNG
SP : DECLARACION DE CONFORMIDAD CE
I : DICHIARAZIONE DI CONFORMITA CE
P : CE DECLARACAO DE CONFORMIDADE
NL : EG KONFORMITEITSVERKLARING
DK : CE OVERENSSTEMMELSE DEKLARATION
S : EG-DEKLARATION OM ÖVERENSSTÄMMELSE
N : EF ÖVERENSSTÄMMELSESERKLÄRING
FIN : VAATIMUSTENMUKAISUUSVAKUUTUS
G : ΕΣ ΔΗΛΩΣΗ ΣΥΜΜΟΡΦΩΣΗΣ

— Individual machinery and safety components
— Machine seule et composants de sécurité
— Gesamtmaschine und Sicherheitseinrichtungen
— Maquinaria individual y componentes de seguridad
— Macchina singola e componenti di sicurezza
— Maquinaria individual e dispositivos de segurança
— Individuele machine en veiligheidscomponenten
— Enkle maskin og sikkerhedskomponenter
— Individuella maskiner och säkerhetskomponenter
— Individuel maskine og sikkerhedsudrust
— Enkelt koniektist ja turvalaitteet
— Ατομικά μηχανήματα και εξαρτήματα ασφαλείας

We, **VESSEL CO., INC.**, OSAKA JAPAN, declare under our sole responsibility that the products: to which this declaration relates is in conformity with the following Machinery Directive and Standard: Machinery Directive 2006/42/EC (98/37/EC).

Model / Modèle / Modell / Modelo /
Modello / Modelo / Model / Model /
Typ/Model / Malli / Modello

VSP-1148

Nous, **VESSEL CO., INC.**, OSAKA JAPAN, déclarons sous notre responsabilité exclusive que le produit ci-dessous: est en conformité avec les exigences des déclarations communautaires concernant le rapprochement des législations des états membres relatives aux: Directives Machines 2006/42/EC (98/37/EC).

Wir, **VESSEL CO., INC.**, OSAKA JAPAN, erklären hiermit unter alleiniger Verantwortung, daß das Produkt, auf das sich diese Erklärung bezieht, den Anforderungen der folgenden Maschinrichtlinien und Standards entspricht: Maschinrichtlinie 2006/42/EC (98/37/EC).

Nosotros, **VESSEL CO., INC.**, OSAKA JAPAN, declaramos bajo nuestra sola responsabilidad, que el producto: al que se refiere esta declaración, está en conformidad con las siguientes Directivas y Standard de Maquinaria: Directiva Maquinaria 2006/42/EC (98/37/EC).

Noi, **VESSEL CO., INC.**, OSAKA JAPAN, dichiariamo sotto la nostra unica responsabilità che il prodotto: cui questa dichiarazione si riferisce, è conforme alle seguenti Direttive: Direttiva Machine 2006/42/EC (98/37/EC).

Nós, **VESSEL CO., INC.**, OSAKA JAPAN, declaramos sob nossa exclusiva responsabilidade que os produtos: a que se refere esta declaração está em conformidade com os requisitos e padrões da Directiva de Maquinaria: Directiva de Maquinaria 2006/42/EC (98/37/EC).

Wij, **VESSEL CO., INC.**, OSAKA JAPAN, verklaren onder onze exclusieve verantwoordelijkheid dat de artikelen op dewelke deze verklaring betrekking heeft, in overeenstemming zijn met volgende Machine Direktieven en Standaarden: Machinery 2006/42/EC (98/37/EC).

Vi, **VESSEL CO., INC.**, OSAKA JAPAN, deklarerer under eneansvar at følgende produkter: som denne erklæring omhandler, er i overensstemmelse med følgende Maskin direktiv og standard: Machinery Directive 2006/42/EC (98/37/EC).

Vi, **VESSEL CO., INC.**, OSAKA JAPAN, deklarerer under eget ansvar att produkten till vilken denna deklaration relaterar sig är i överensstämmelse med de krav som finns i Rådets direktiv 2006/42/EC (98/37/EC).

Vi, **VESSEL CO., INC.**, OSAKA JAPAN, deklarerer under eget ansvar at følgende produkter som denne erklæring omhandler, er i overensstemmelse med følgende Maskindirektiv og standard: Machinery Directive 2006/42/EC (98/37/EC).

Me, **VESSEL CO., INC.**, OSAKA JAPAN, vakuutamme olevamme yksinomaissessa vastuussaa siitä, että tämä tuote: johon tämä ilmoitus viittaa, on yhdenmukainen seuraavien koneidirektiivien ja standardien kanssa: Konedirektiivi 2006/42/EC (98/37/EC).

Εμείς, η **VESSEL CO., INC.**, OSAKA JAPAN, δηλώνουμε υπ' ευθύνη μας ότι τα προϊόντα στα οποία η δήλωση αυτή αναφέρεται, συμμορφώνονται με τις παρακάτω Κοινοτικές Μηχανολογικές Οδηγίες και Πρότυπα, Μηχανολογική Οδηγία 2006/42/EC (98/37/EC).

Name of and position of issuer / Nom et fonction de l'émetteur / Name and Position des Erstelleurs / Nombre y cargo del expedidor / Nome e posizione del dichiarante / Nome e cargo do emissor / Naam en functie van de uitgever / Udsteder, navn og stilling / Utsteders navn og stilling / Utgårdarens namn och befattning / Ilmoituksen antajan allekirjoitus / Υπογραφή εκδότη

Yasushi Shiomi, Plant Manager

Signature of issuer / Signature de l'émetteur / Unterschrift des Erstelleurs / Firma del expedidor / Firma del dichiarante / Assinatura do emissor / Handtekening van de uitgever / Udsteder, underskrift / Utsteders signatur / Utgårdarens namnteckning/Ilmoituksen antajan allekirjoitus / Υπογραφή εκδότη

VESSEL Co., Inc.

Yasushi Shiomi

VESSEL

CE DECLARATION OF CONFORMITY

CE適合宣言書

Name of company VESSEL FUKUCHIYAMA CO.,LTD.
社名 株式会社 ベツセル福知山
Address 20-1, OSADANO-CHO 1-CHOME
住所 FUKUCHIYAMA-SHI KYOTO 620-0853 JAPAN
京都府福知山市長田野町1丁目20番地1

Declares, in sole responsibility, that the product
独自の責任において、次の製品が

Model : VSP-1148

Referred to this declaration conforms with the standard(s) or directive(s)
as far as applicable:
適用可能な範囲において次の指令または規格に適合していることを宣言する。

Standard : ISO 28927-2
ISO 15744
ISO 11148-6

Machinery Directive 2006/42/EC (98/37/EC)

The company named above will keep on file for review the following technical
Documentation:

上記の者は、以下の技術資料を査察に備え保持する。

- Technical drawings 図面
- Other technical documentation その他技術資料

Importer/Distributor

Kyoto Japan June 1th, 2025

(自筆サイン) Yasushi Shiomi
Yasushi shiomi
Engineering Dept.
VESSEL FUKUCHIYAMA CO.,LTD.

Inspection certificate 検査合格証

Serial No. 製造番号	
--------------------	--

This product has been shipped after performance and other shipping inspections. Read this instruction manual carefully to ensure proper use and performance.

本機は性能およびその他の出荷検査をした後出荷されております。本機が性能を発揮するために、この取扱説明書をよくお読みいただき、正しくご使用ください。

Inspection :
検査 :



VESSEL Co., Inc.

VESSEL Co., Inc.

17-25 Fukae-kita 2-Chome Higashinari-ku, OSAKA 537-0001 JAPAN

E-mail: export@vessel.co.jp

Web site: www.vessel.co.jp/english/

株式会社ベッセル

お客様お問い合わせ窓口

06-6976-7771 8:30-17:30 ※平日の12:00～13:00、土・日・祝日・夏期休暇・年末年始は除きます。

本社	〒537-0001	大阪市東成区深江北2丁目17番25号	TEL.06-6976-7771	FAX.06-6971-1309
札幌出張所	〒065-0011	札幌市東区北11条東14丁目1番1号	TEL.011-711-5003	FAX.011-704-4725
仙台出張所	〒984-0002	仙台市若林区卸町東1丁目2番10号	TEL.022-236-1567	FAX.022-232-7959
北関東営業所	〒370-0044	群馬県高崎市若押町2丁目7番6	TEL.027-310-3757	FAX.050-3852-2745
東京支店	〒143-0025	東京都大田区南馬込5丁目43番13号	TEL.03-3776-1831	FAX.03-3776-5607
名古屋営業所	〒457-0014	名古屋市南区呼続四丁目3番1号	TEL.052-821-9575	FAX.050-3606-2649
大阪支店	〒537-0001	大阪市東成区深江北2丁目17番25号	TEL.06-6976-7772	FAX.06-6971-1309
広島出張所	〒733-0035	広島市西区南観音7丁目8-11	TEL.082-291-0106	FAX.082-295-1727
福岡営業所	〒812-0016	福岡市博多区博多駅南6丁目1番22号	TEL.092-411-5710	FAX.092-411-5770